

MONET
Garden
SUNSURIA CITY
GARDEN VILLAS

Art of living, reimagined here

Where A Beautiful Life Comes Into Bloom



Artist's Impression of Pool Garden Inspired by Claude Monet

World-famous for his Impressionist paintings, Claude Monet was an artist who personally planned and planted his gardens to capture the beautiful colours of nature onto his canvas.

Inspired by such vivid passion for plants, Monet Garden carries through the artist's touch with its 3-storey Garden Villas. Where home reimagines the art of living for the pleasure of your homecoming experience.

Experience Nature's Evergreen Embrace



Actual Photo of the lush surroundings of Giverny Park



Inspiring idyllic indulgence, the 14.8-acre Giverny Park offers an abundance of outdoor delights such as a jogging track, reflexology park, lily pond and many more recreational facilities.

The pursuit of leisure continues at the Clubhouse, where residents experience the sole privilege of enjoying Clubhouse facilities such as the swimming pool, gym and multipurpose hall. These exclusive facilities offer residents plenty of delightful choices to rest, relax and socialise with friends and fellow neighbours.



Artist's Impression of Clubhouse Facilities

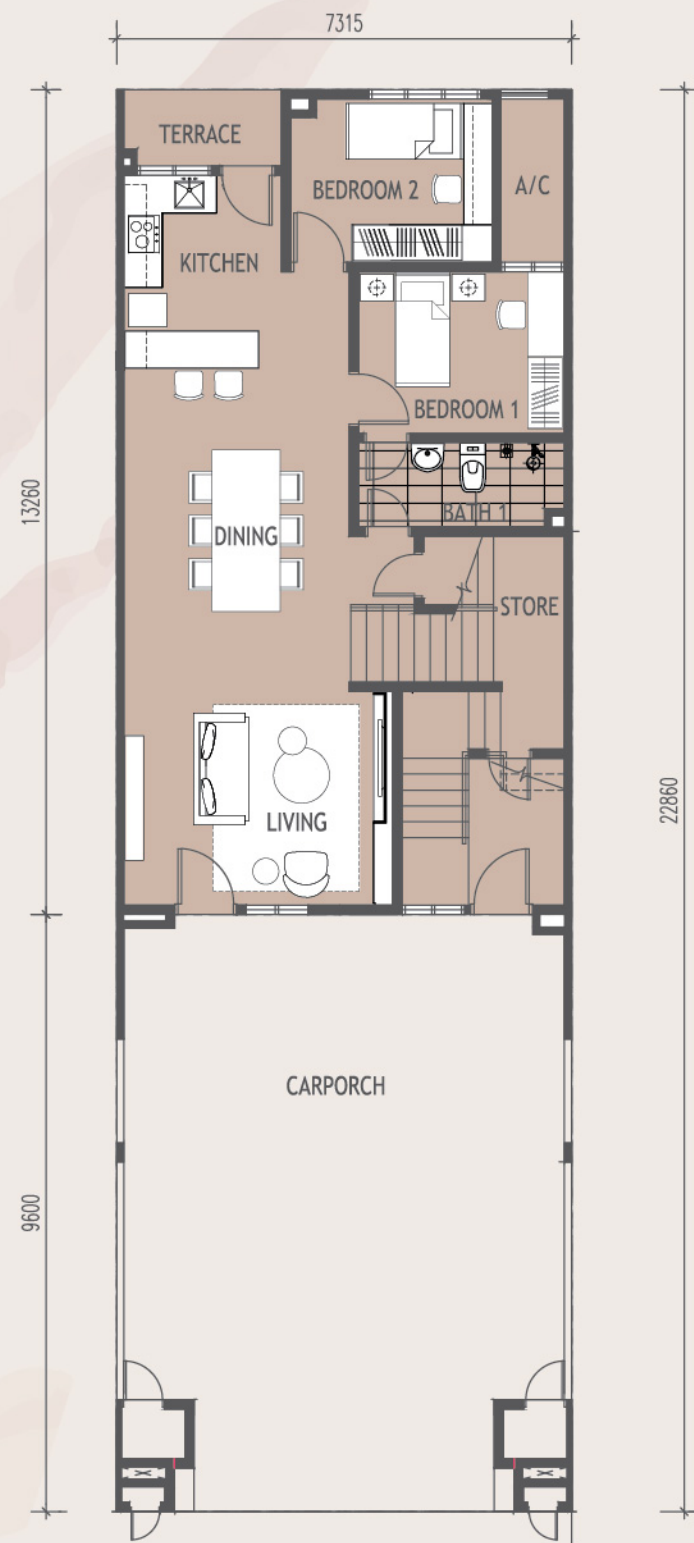
Floor Plans

Intermediate Unit - RT4
Garden Villas

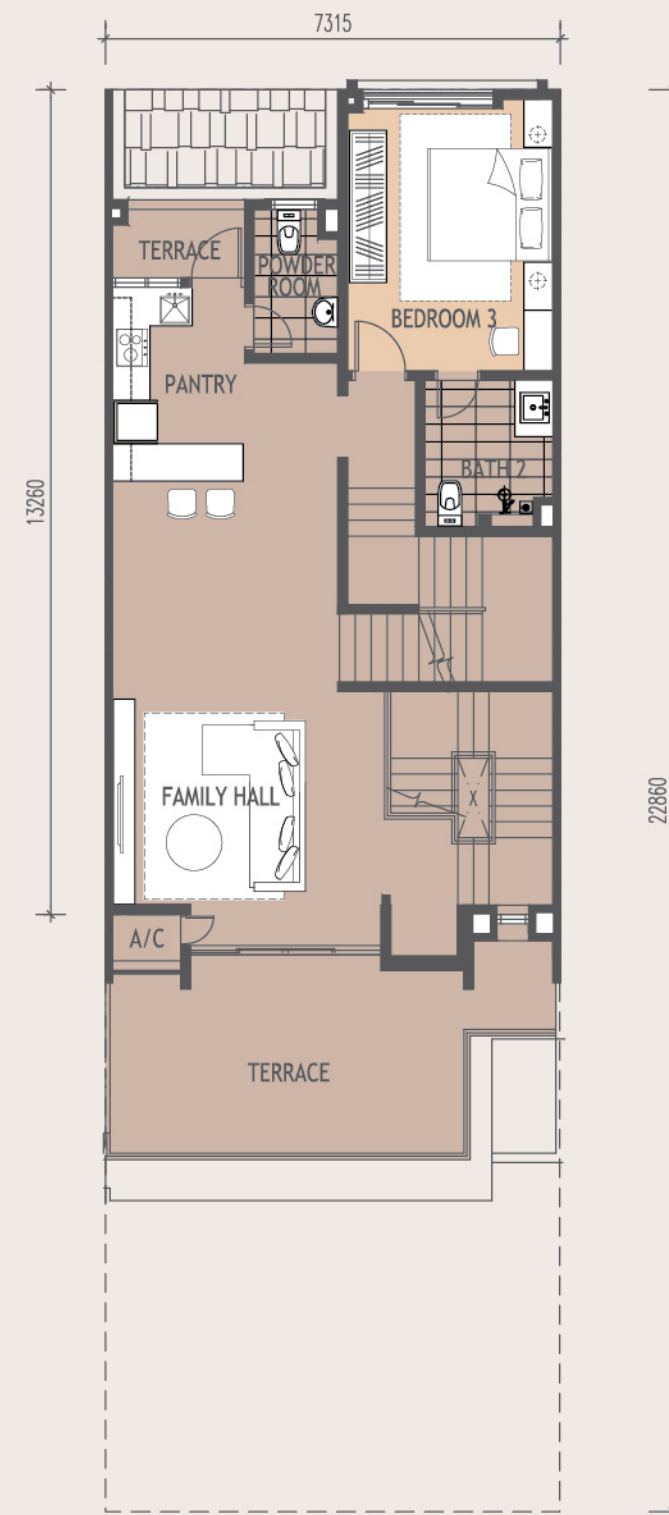
6 Bedrooms, 4 Bathrooms,
1 Powder Room

Built-up Area: 3,449 sq. ft.

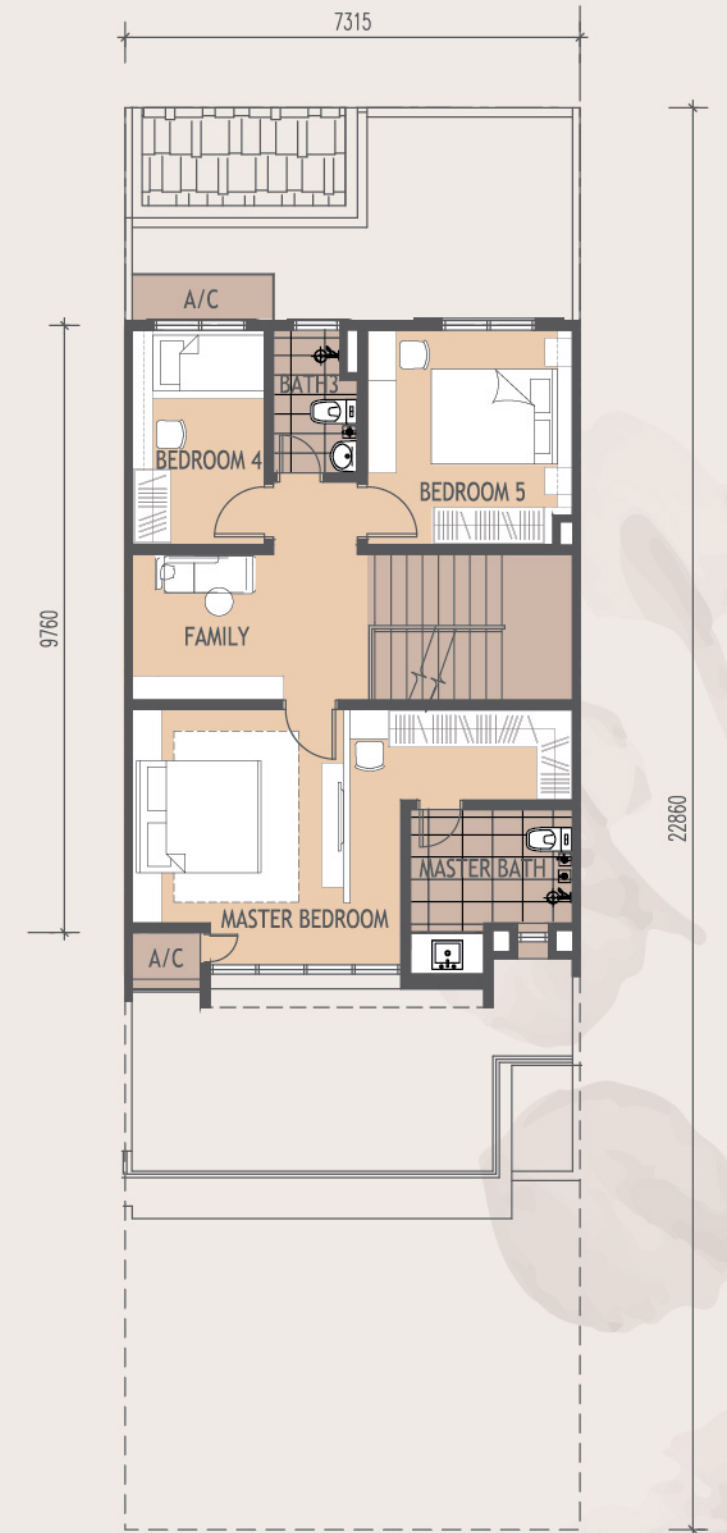
Land Area: 24' x 75'



GROUND FLOOR



1ST FLOOR



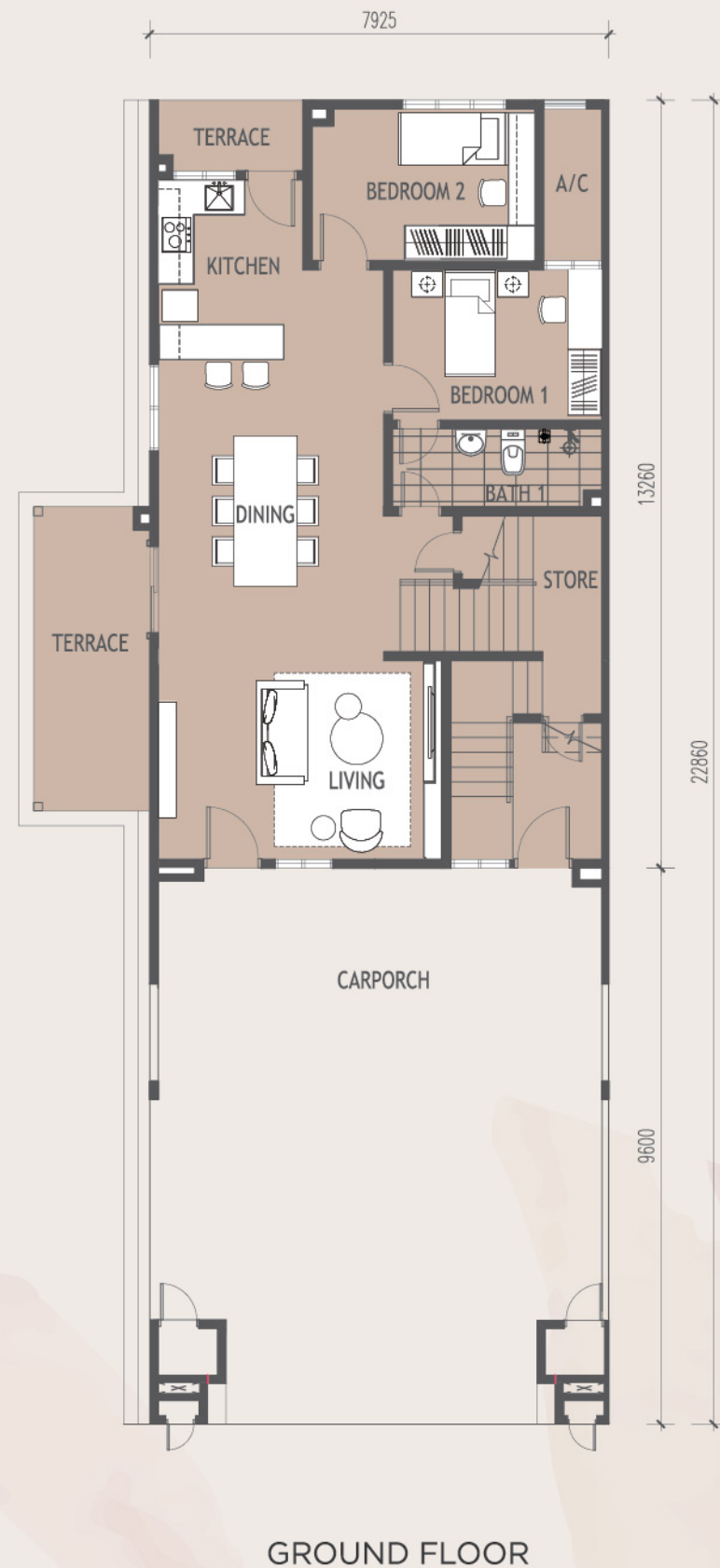
2ND FLOOR

Corner Unit - RT5
Garden Villas

6 Bedrooms, 4 Bathrooms,
1 Powder Room

Built-up Area: 3,970 sq. ft.

Land Area: 26' x 75'



Your Family Garden Villa Awaits

Featuring 114 units of 3-storey Garden Villas, Monet Garden welcomes you to a beautiful living experience where le jardin à la française, otherwise known as the 'Garden In The French Manner' awaits your enjoyment.

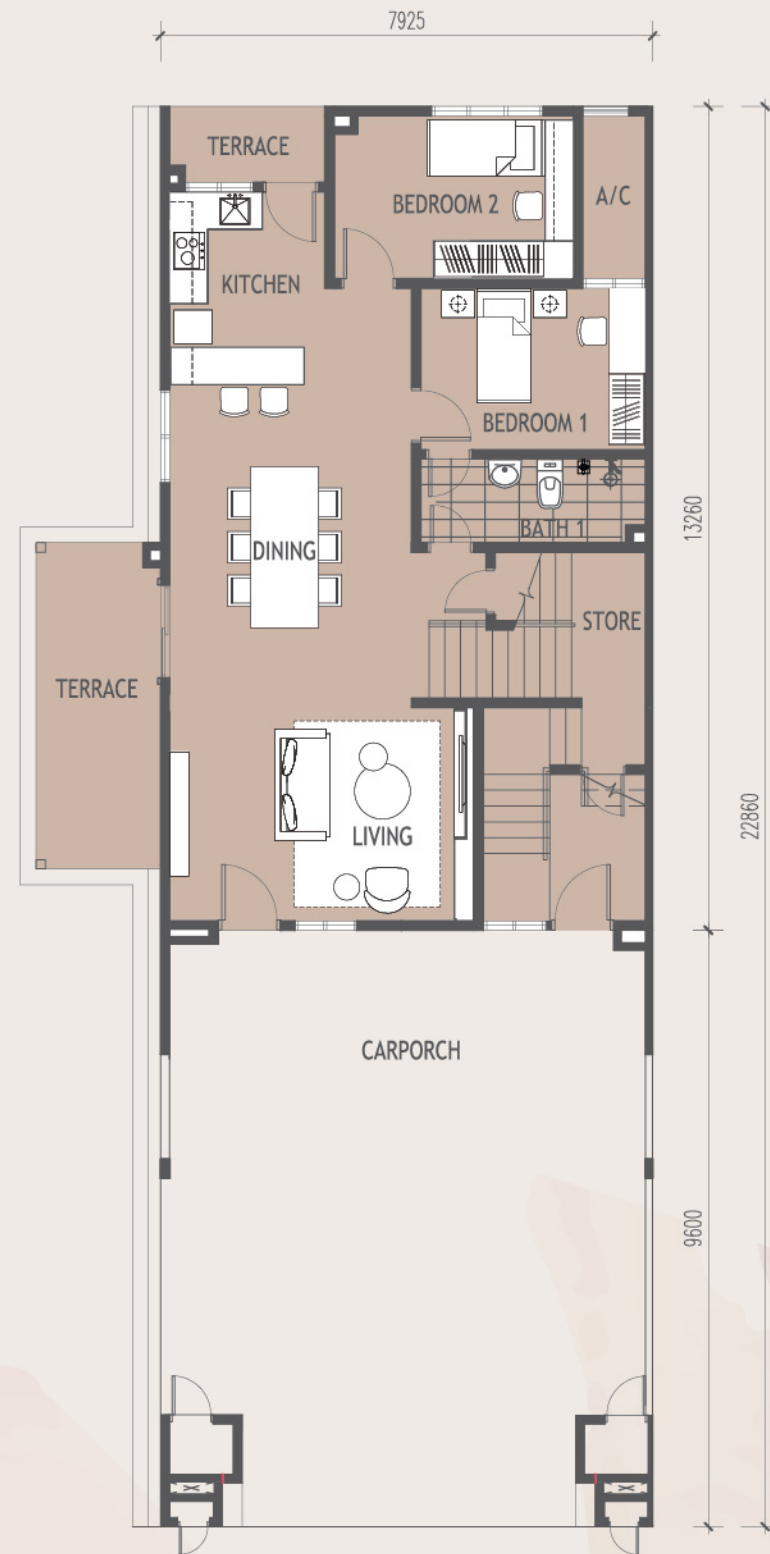
From the outside in, the French aesthetic is expressed, thus creating a living environment inspired by art and comfort. Spaces of grandeur in nature and residence alike awaits, blissful and beautiful for the whole family to discover and enjoy.

Corner Unit - RT5
Garden Villas

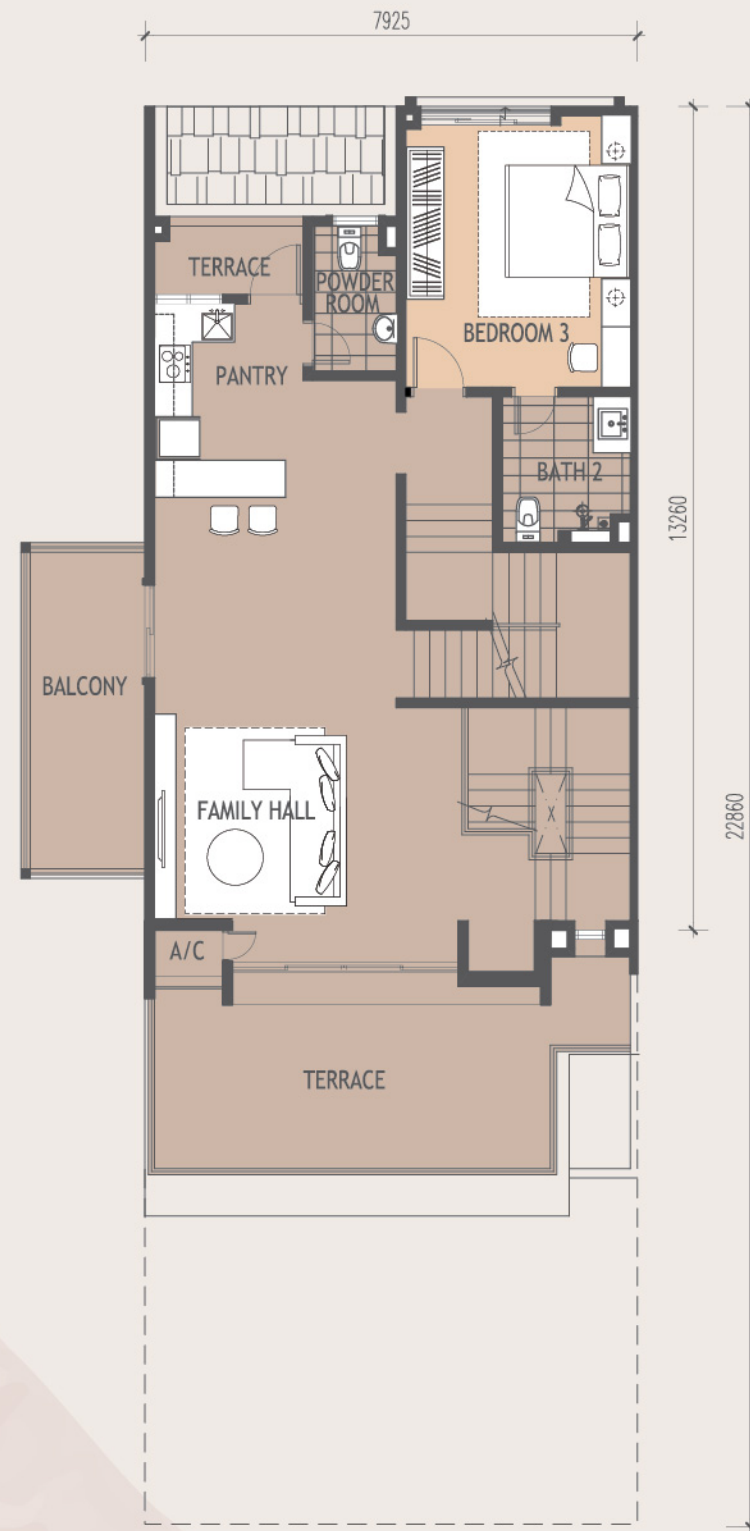
6 Bedrooms, 4 Bathrooms,
1 Powder Room

Built-up Area: 3,970 sq. ft.

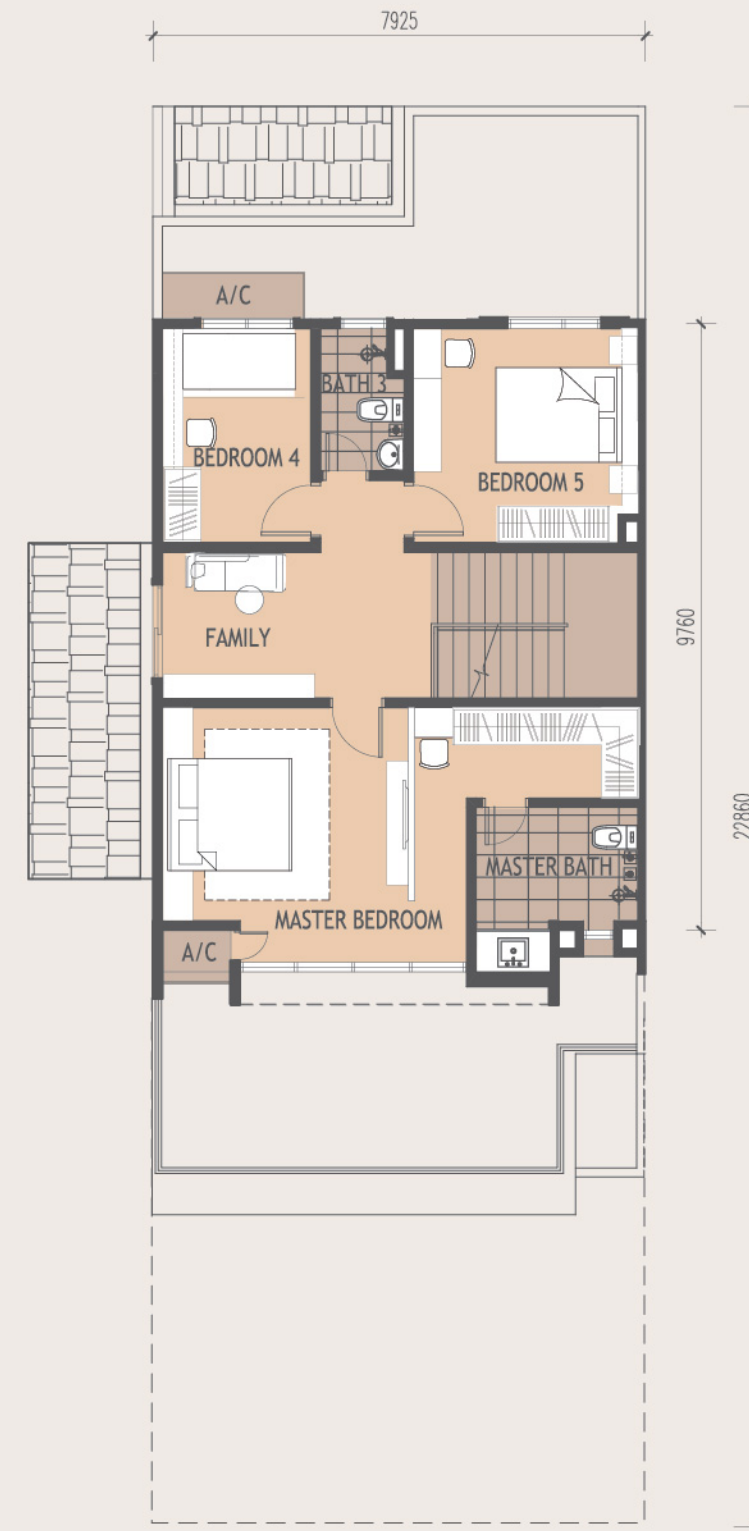
Land Area: 26' x 75'



GROUND FLOOR



1ST FLOOR



2ND FLOOR

Specifications

- a) Structure
Reinforced Concrete Frame
- b) Wall
Masonry Wall / Lightweight Concrete Wall / Concrete Wall
- c) Roof
Concrete Roof / Roof Tiles
- d) Ceiling
Skim Coat Soffit / Plaster Ceiling
- e) Window
Aluminium Framed Window
- f) Door
Solid Timber Door / Timber Flush Door / Aluminium Framed Sliding Glass Door
- g) Ironmongery
Quality Lockset
- h) Floor Finishes
Tiles / Laminated Flooring / Concrete Imprint / Cement Render
- i) Wall Finishes
Plaster & Paint / Skim Coat & Paint / Tiles

	RT4 Intermediate	RT5 Corner	RT5A Corner	RT6 End
j) Sanitary Installation				
Water Closet	5 nos.	5 nos.	5 nos.	5 nos.
Wash Basin	5 nos.	5 nos.	5 nos.	5 nos.
Shower Rose	4 nos.	4 nos.	4 nos.	4 nos.
Kitchen Sink	2 nos.	2 nos.	2 nos.	2 nos.
Water Tap	9 nos.	9 nos.	9 nos.	9 nos.
k) Electrical Installation				
Lighting Point	38	40	38	38
13 amp Power Point	31	31	31	31
15 amp Power Point	2	2	2	2
SMATV Point	4	4	4	4
Air Conditioning Point	10	10	10	10
Fiber Wall Socket Point	2	2	2	2
Ceiling Fan Point	10	10	10	10
Water Heater Point	4	4	4	4
Exhaust Fan (Bathroom)	2	2	2	2
Booster Pump Point	2	2	2	2
l) Turfing Spot Turfing				
m) Miscellaneous Refuse Chamber Letter Box				

Life In An Intelligent City

SMART • LIVABLE • SUSTAINABLE

Imagine life where everything you need is within easy reach.

Introducing Sunsuria City, an international lifestyle destination built around the core of Xiamen University Malaysia, and close to Horizon Village Outlets (HVO) and KLIA - all effortlessly linked by its own integrated connection to the Express Rail Link (ERL).

A transit oriented development (TOD) brings it all together by connecting the ERL station to a plethora of exciting hotspots including the highly anticipated Celebration Centre.

Featuring 525 acres of retail malls, condominiums, serviced apartments, commercial shoptots, hotels, and landed residential homes, its prime location is only the cherry on top of a perfect balance of ITC - ready infrastructure, livable environments, and a sustainable master plan.

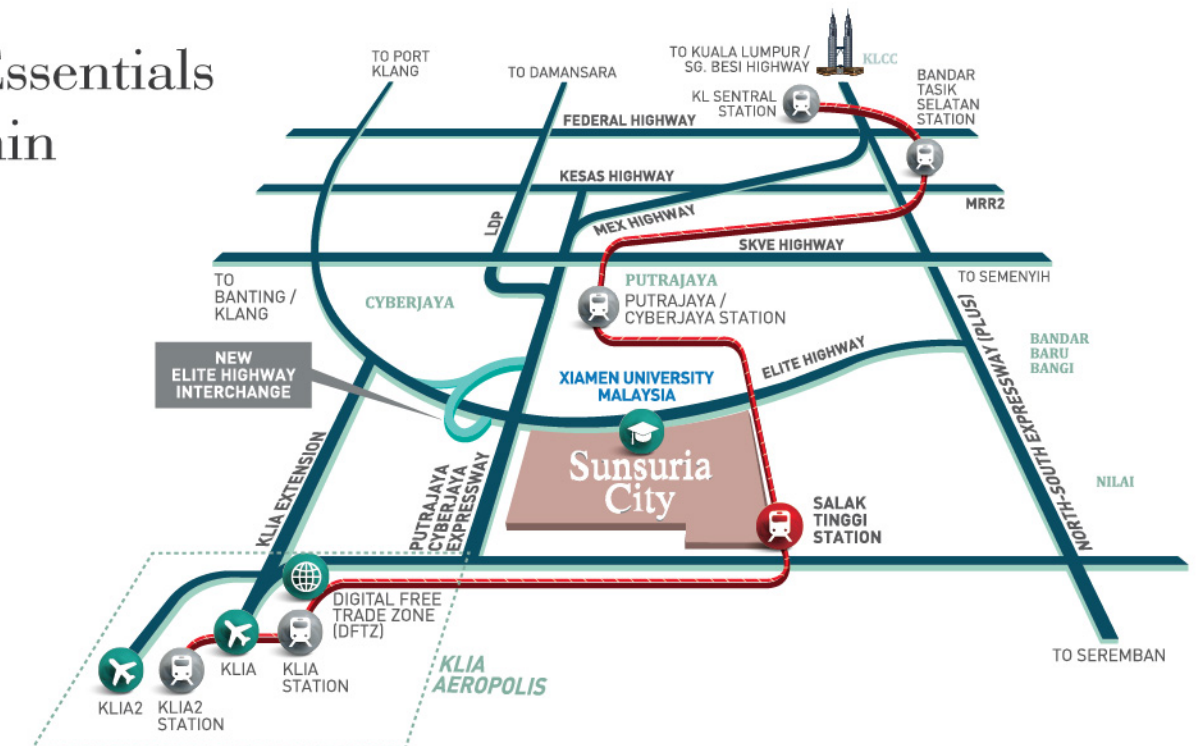
There is truly no doubt that Sunsuria City is the township of tomorrow, built to bring you the very best of today.

Artful Serenity In Abundance

A world of green serenity is yours to experience when you come home to the safe and scenic surroundings of the gated and guarded sanctuary in Monet Garden.



Everyday Essentials Easily Within Reach





Call us today for more info!

+603-6142 2727 | +6018-7750 777

SUNSURIA
Building Today Creating Tomorrow



Sunsuria City Sdn. Bhd. (1048895-A)
Suite 1-3A, Main Tower, Sunsuria Avenue, Persiaran Mahogani,
Kota Damansara, PJU 5, 47810 Petaling Jaya, Selangor Darul Ehsan.

Developer License No.: 14579-5/10-2019/0808(L) • Validity Date: 13/10/2017 – 12/10/2019 • Advertising & Sales Permit No.: 14579-5/10-2019/0808(P) • Validity Date: 13/10/2017 – 12/10/2019 • Land Tenure: Freehold • Land Encumbrances: Charged to Public Bank Berhad • Restriction of Interest: None • Building Plan No.: MP.SPG.600-34/4/94 • Authority Approving Building Plan: Majlis Perbandaran Sepang • Expected Date of Completion: December 2020 • 3-Storey Terrace House: 114 Units and 3-Storey Townhouse: 132 Units • Total Units: 246 Units • Land Size: 1,800 – 4,833 sq.ft. • Built-up Size: Terrace House: 3,235 – 3,736 sq.ft. and Townhouse: 1,421 – 1,991 sq.ft. • Townhouse: Min. Price: RM 715,000.00 • Max. Price: RM 1,190,200.00 • Terrace House: Min. Price: RM 2,248,050.00 • Max. Price: RM 2,836,050.00 • 7% Bumiputera Discount • The information contained herein is subject to change without notification as may be required by relevant authorities or the developer's consultants and cannot form part of an offer or contact. Actual built-up of units may vary slightly from measurements given. Whilst every care is taken in providing this information, the owner, developer and managers cannot be held liable for variations. All illustrations and pictures are artist's impressions only. The items are subject to variations, modifications and substitutions as may be recommended by the Company's consultants and/or relevant Approving Authorities. Terms & conditions apply • IKLAN INI TELAH DILULUSKAN OLEH JABATAN PERUMAHAN NEGARA

Printed on environmentally friendly paper.